

PHOTOMETRIC TEST REPORT

DECOR PRO ROUND FIXED -
TEXTURED WHITE - 4002595

astro

DECOR PRO ROUND FIXED - TEXTURED

astro

LIGHT EFFICIENCY:

103 Lumen/Watt

LIGHT QUALITY:

CRI: 96.4

COLOR TEMPERATURE:

2699 K

OUTPUT: 1224 lm

PEAK: 6862 cd

POWER: 11.9 W

PF: 0.95



Tracking number: [n/a](#)

Product name:

Decor Pro Round Fixed - Textured White - 4002595

Item number:

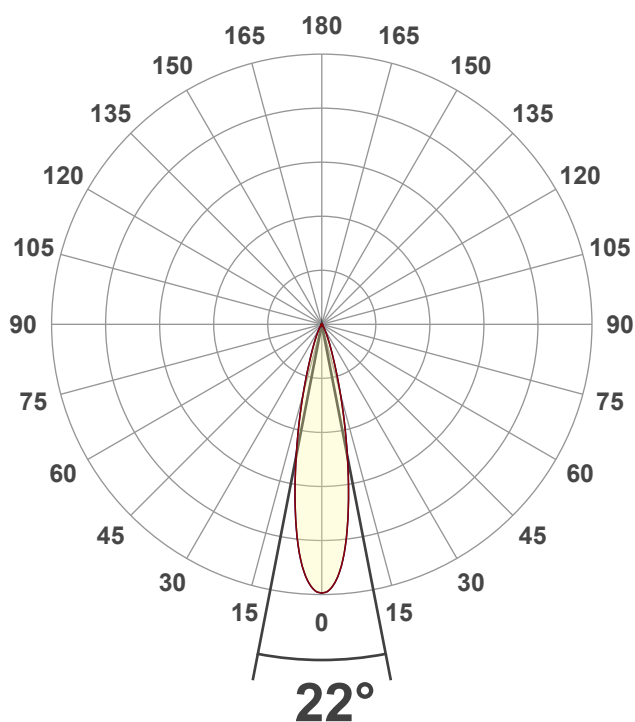
DRF-TW-HE27G1-15G1-X-D1

Date and time:

30/01/2025 10:53:30

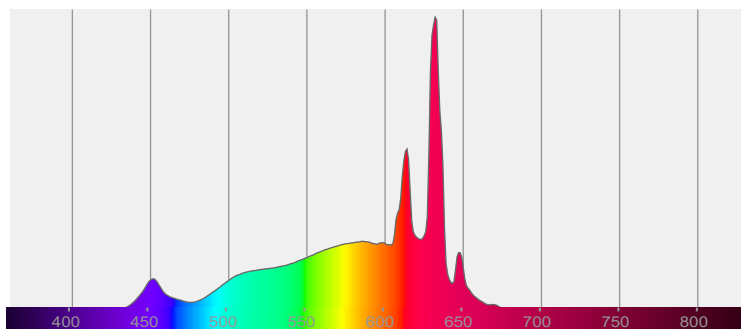
Description:

IP20 LED Downlight

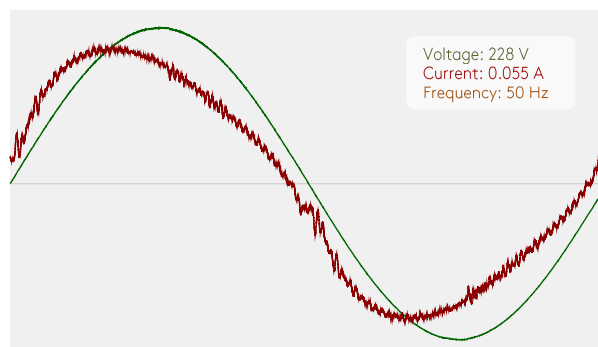


CIE 1931
x: 0.461
y: 0.411

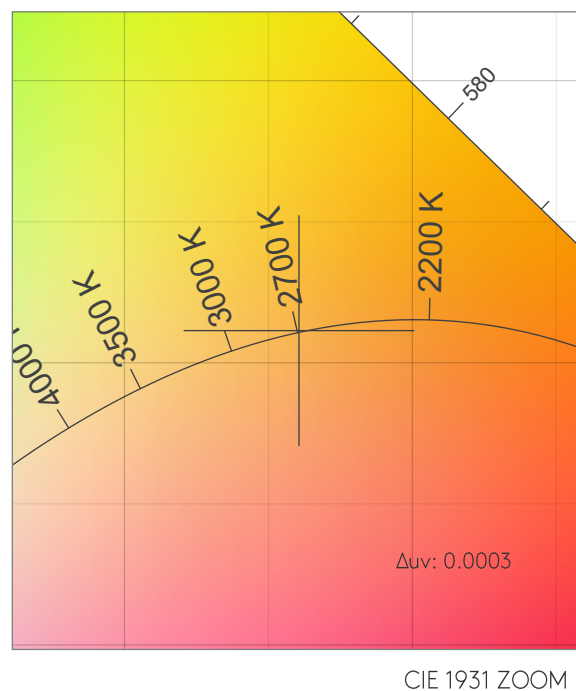
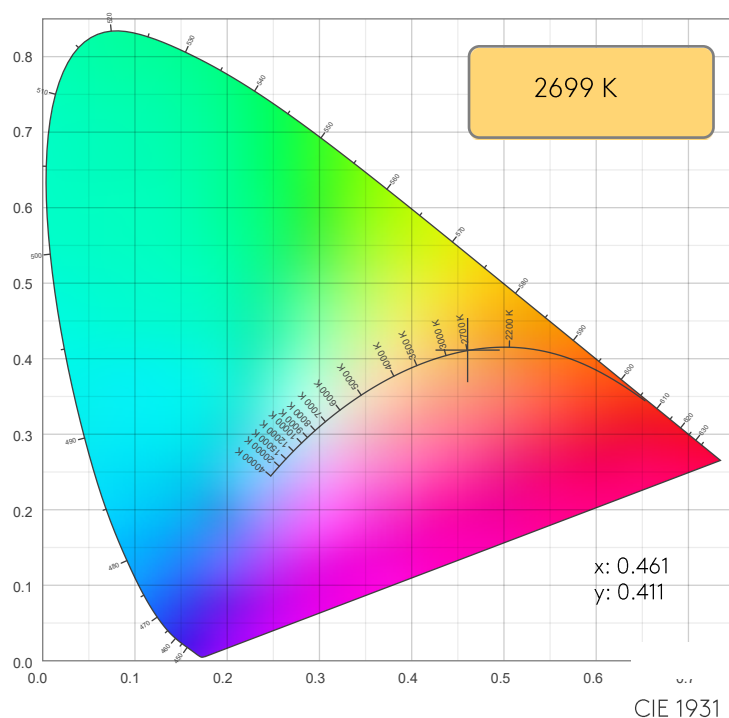
SPECTRA



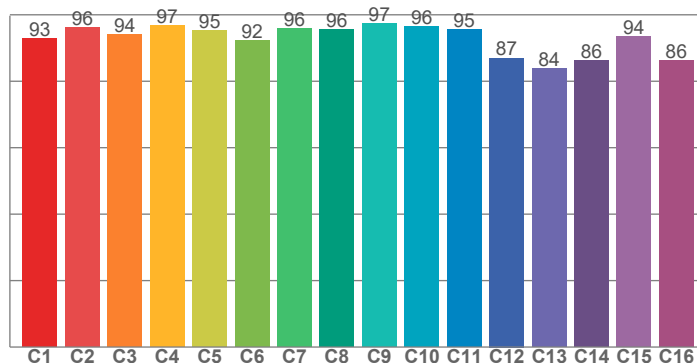
POWER



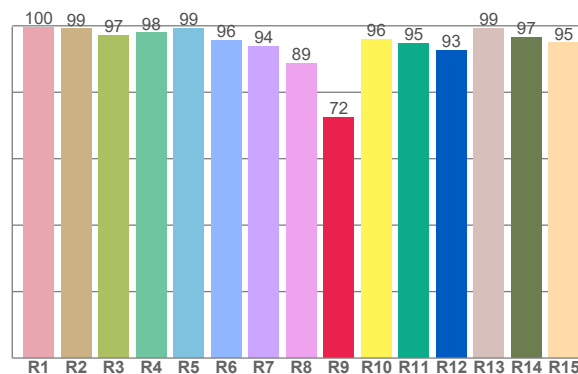
COLOR DETAILS



TM30: 93.4



CRI: 96.4 (R1-R8)



CRI R values, only R1-R8 are used to calculate final CRI value

R1	R2	R3	R4	R5	R6	R7	R8	R9	R10	R11	R12	R13	R14	R15
99.6	99.1	97.0	97.9	99.3	95.7	93.9	88.6	72.4	95.8	94.7	92.6	99.2	96.6	94.9

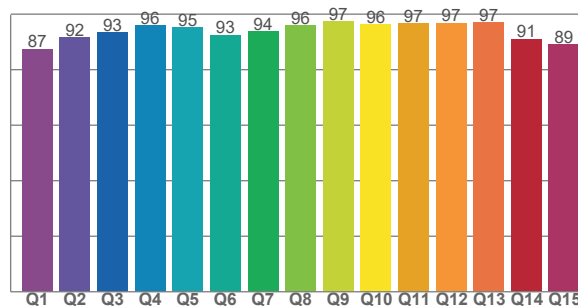
TM30 C values, 16 binned values out of total of 99 C values

C1	C2	C3	C4	C5	C6	C7	C8	C9	C10	C11	C12	C13	C14	C15	C16
92.8	96.2	93.9	96.8	95.3	92.2	96.0	95.6	97.3	96.4	95.5	87.0	83.9	86.3	93.5	86.2

CQS Q values

Q1	Q2	Q3	Q4	Q5	Q6	Q7	Q8	Q9	Q10	Q11	Q12	Q13	Q14	Q15
87.4	91.5	93.5	95.8	95.1	92.6	93.8	96.0	97.3	96.2	96.6	96.8	97.0	91.0	89.0

CQS: 92.9



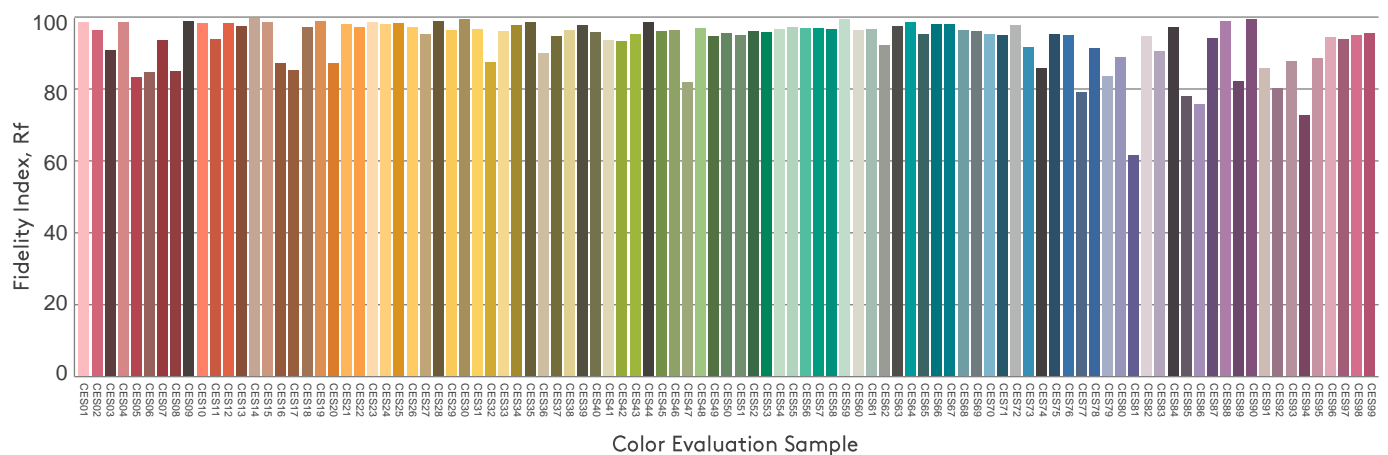
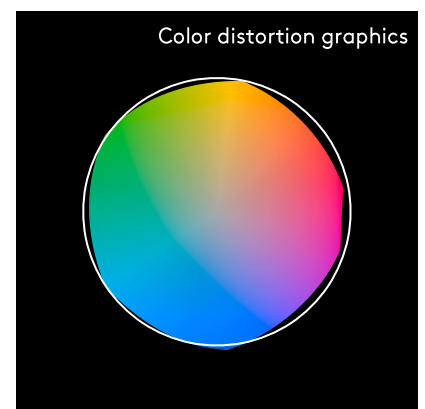
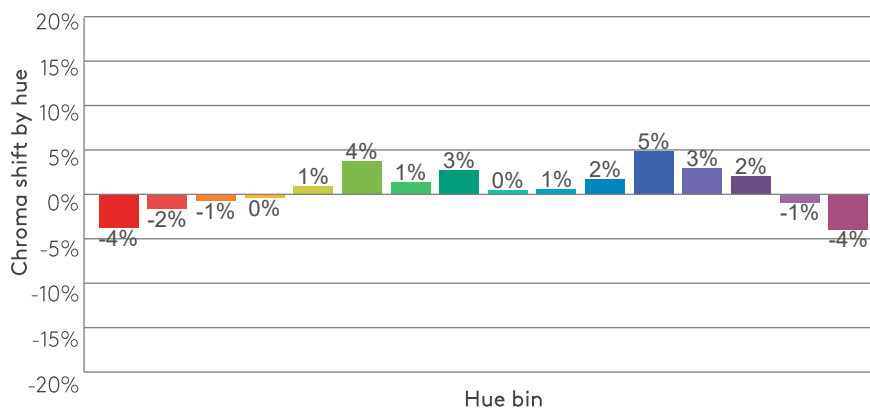
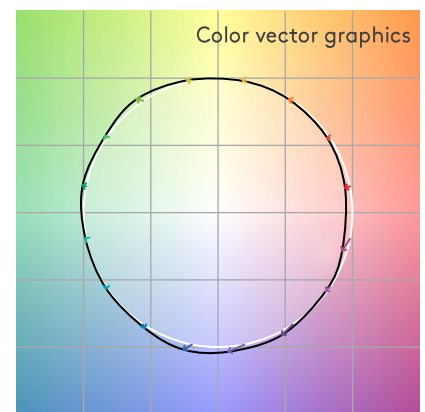
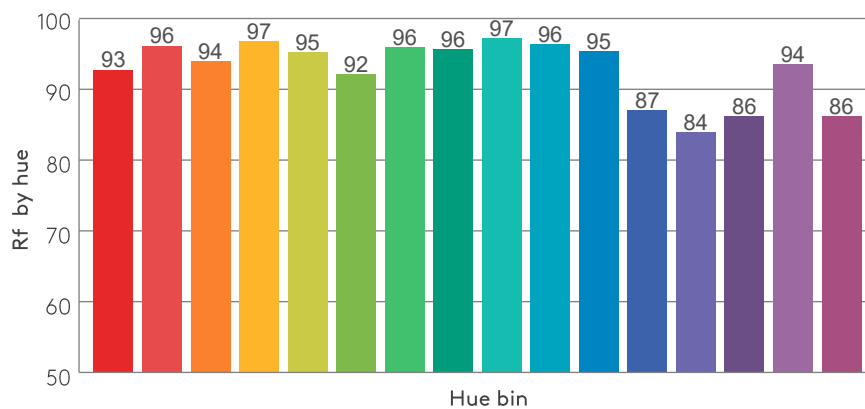
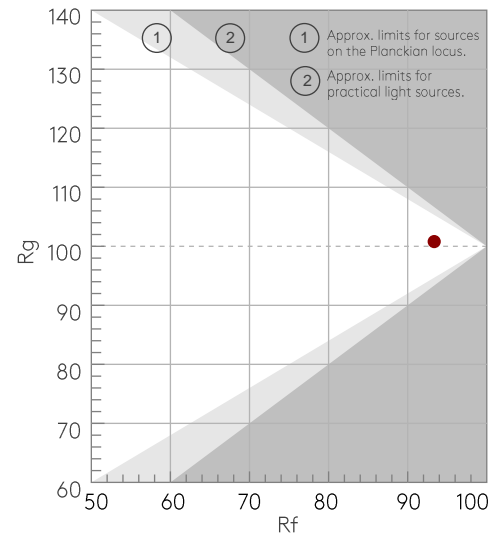
COLOR PARAMETERS

Color temperature	Color rendering index	Red component	Color fidelity	Color gamut	Color quality scale	Color coordinate cie 1931	Color coordinate cie 1931	Color coordinate	Color coordinate	Color deviation from black body
CCT	CRI	CRI R9	TM30 Rf	TM30 Rg	CQS	x	y	u	v	Δuv
2699 K	96.4	72.4	93.4	100.8	92.9	0.461	0.411	0.263	0.352	0.0003

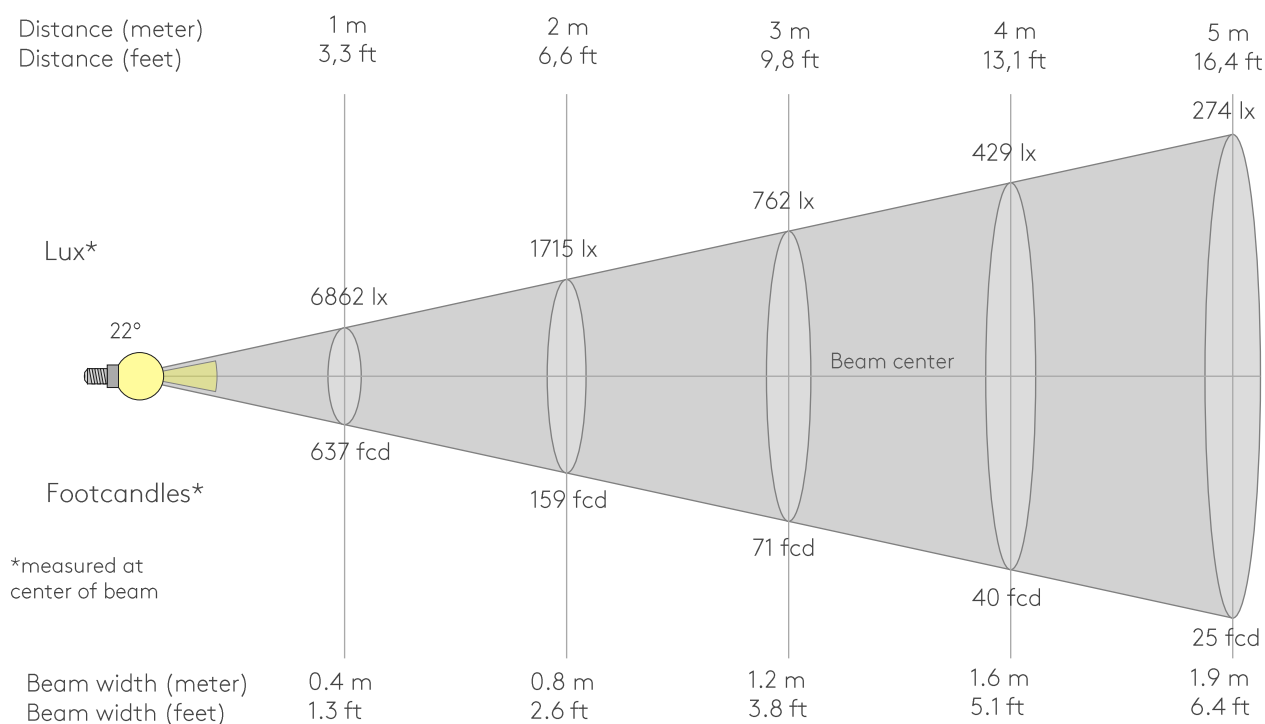
Rf 93.4
Fidelity index Rf

Rg 100.8
Gammut index Rg

Hue Bin	Rf	Graphic shifts (%)	
		Chroma	Hue
1	93	-4%	0%
2	96	-2%	1%
3	94	-1%	3%
4	97	0%	1%
5	95	1%	3%
6	92	4%	4%
7	96	1%	-1%
8	96	3%	0%
9	97	0%	-1%
10	96	1%	1%
11	95	2%	2%
12	87	5%	-5%
13	84	3%	-12%
14	86	2%	-11%
15	94	-1%	-4%
16	86	-4%	-10%



BEAM DETAILS



Beam intensities from 1-20m

1m	2m	3m	4m	5m	6m	7m	8m	9m	10m	11m	12m	13m	14m	15m	16m	17m	18m	19m	20m
3.3ft	6.6ft	9.8ft	13.1ft	16.4ft	19.7ft	23ft	26.2ft	29.5ft	32.8ft	36.1ft	39.4ft	42.7ft	45.9ft	49.2ft	52.5ft	55.8ft	59.1ft	62.3ft	65.6ft
6862lx	1715lx	762lx	429lx	274lx	191lx	140lx	107lx	85lx	69lx	57lx	48lx	41lx	35lx	30lx	27lx	24lx	21lx	19lx	17lx
637.5fcd	159.4fcd	70.8fcd	39.8fcd	25.5fcd	17.7fcd	13fcd	10fcd	7.9fcd	6.4fcd	5.3fcd	4.4fcd	3.8fcd	3.3fcd	2.8fcd	2.5fcd	2.2fcd	2fcd	1.8fcd	1.6fcd

Intensities in 0° c-plane

0°	2°	4°	6°	8°	10°	12°	14°	16°	18°	20°	22°	24°	26°	28°	30°	32°	34°	36°	38°
6862	6743	6364	5718	4845	3891	2979	2182	1524	1041	725	513	366	263	190	135	97	69	47	30
100%	98%	93%	83%	71%	57%	43%	32%	22%	15%	11%	7%	5%	4%	3%	2%	1%	1%	1%	0%

Intensities in 90° c-plane

0°	2°	4°	6°	8°	10°	12°	14°	16°	18°	20°	22°	24°	26°	28°	30°	32°	34°	36°	38°
6862	6743	6364	5718	4845	3891	2979	2182	1524	1041	725	513	366	263	190	135	97	69	47	30
100%	98%	93%	83%	71%	57%	43%	32%	22%	15%	11%	7%	5%	4%	3%	2%	1%	1%	1%	0%

Intensities in 180° c-plane

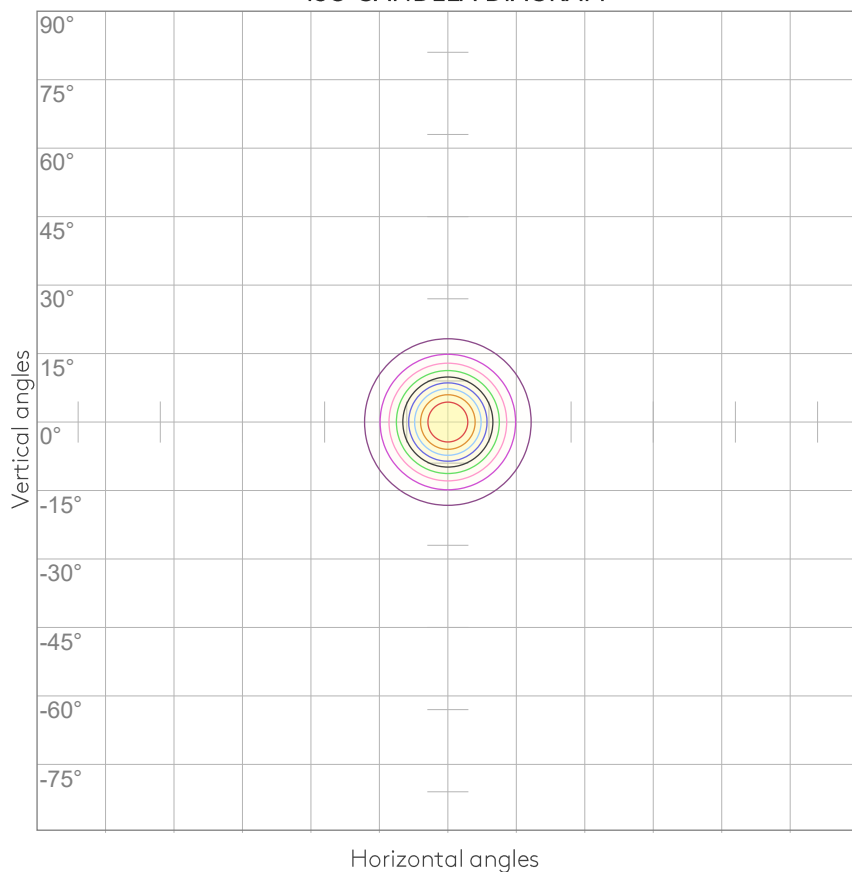
0°	2°	4°	6°	8°	10°	12°	14°	16°	18°	20°	22°	24°	26°	28°	30°	32°	34°	36°	38°
6862	6743	6364	5718	4845	3891	2979	2182	1524	1041	725	513	366	263	190	135	97	69	47	30
100%	98%	93%	83%	71%	57%	43%	32%	22%	15%	11%	7%	5%	4%	3%	2%	1%	1%	1%	0%

Intensities in 270° c-plane

0°	2°	4°	6°	8°	10°	12°	14°	16°	18°	20°	22°	24°	26°	28°	30°	32°	34°	36°	38°
6862	6743	6364	5718	4845	3891	2979	2182	1524	1041	725	513	366	263	190	135	97	69	47	30
100%	98%	93%	83%	71%	57%	43%	32%	22%	15%	11%	7%	5%	4%	3%	2%	1%	1%	1%	0%

Beam angle 50%	Field angle 10%	Cutoff angle 2,5%	Intensity ratio in 120° cone	Intensity ratio in 90° cone
22°	40.7°	57.3°	99.7%	99.5%

ISO CANDELA DIAGRAM



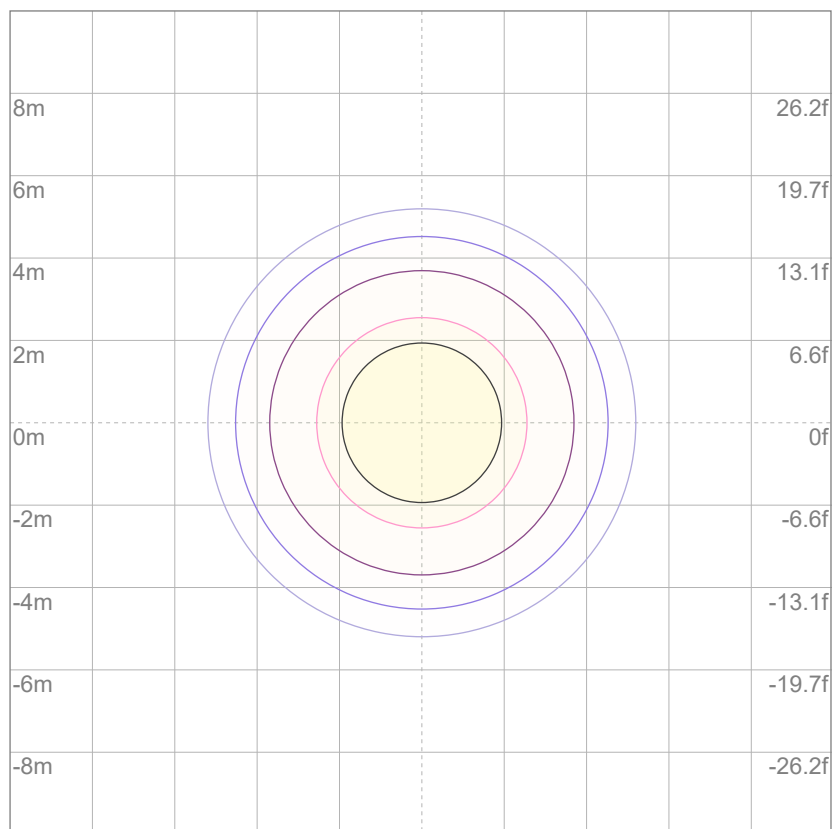
10%	686 cd
20%	1372 cd
30%	2058 cd
40%	2745 cd
50%	3431 cd
60%	4117 cd
70%	4803 cd
80%	5489 cd
90%	6175 cd

Conditions:

Number of c-planes: 8

Candela at center: 6862 cd

ISO LUX DIAGRAM



Mounting height: 10 meters (33 feet)

3%	2.06 lx
5%	3.43 lx
10%	6.86 lx
30%	20.6 lx
50%	{LUX_10M50} lx

Conditions:

Number of c-planes: 8

Lux at center: 68.6 lx

Lux distribution on a surface when lamp is mounted at 10 meters from the surface.

UGR

GLARE EVALUATION ACCORDING TO UGR

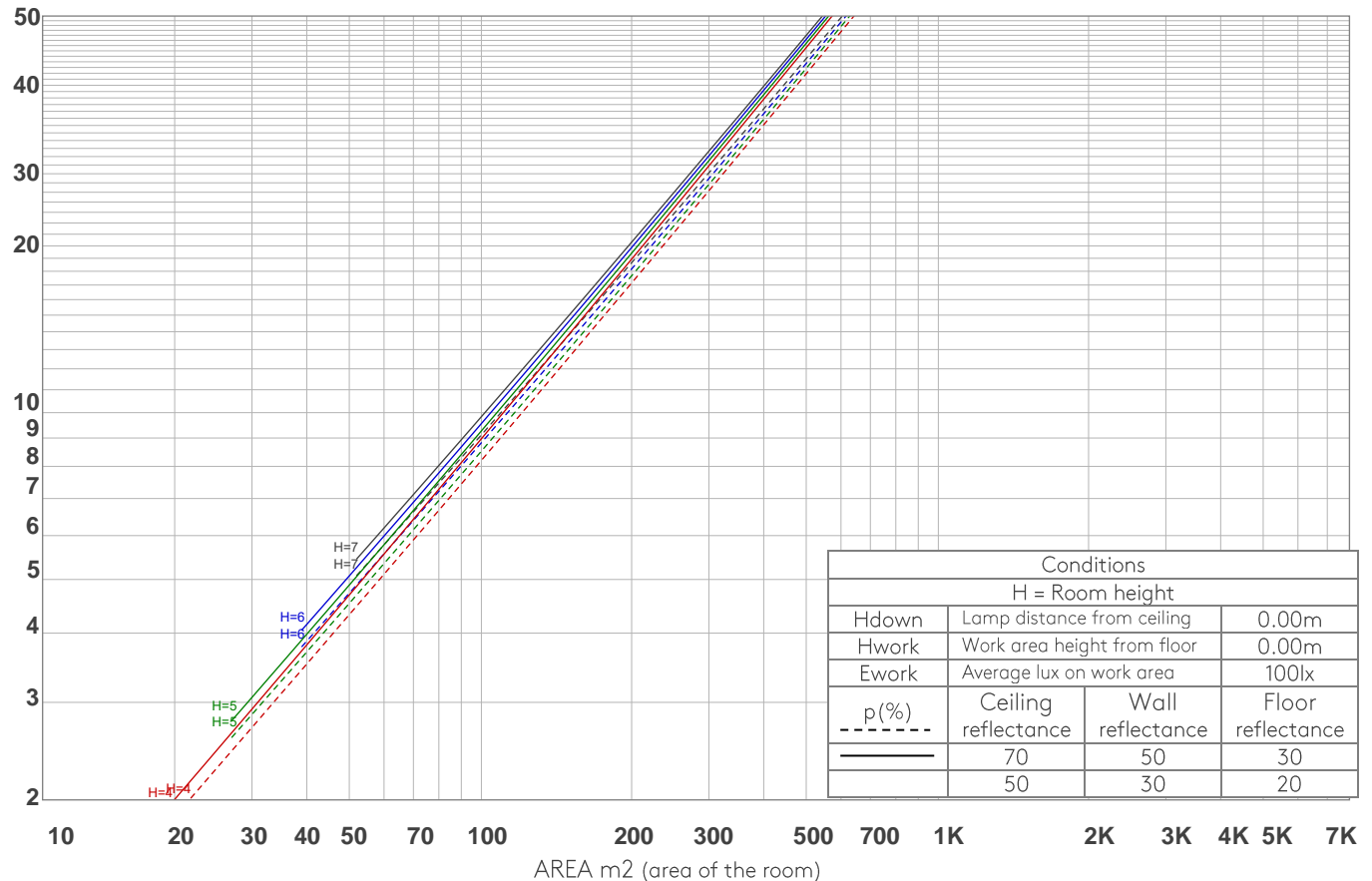
p Ceiling		70	70	50	50	30	70	70	50	50	30
p Walls		50	30	50	30	30	50	30	50	30	30
p Floor		20	20	20	20	20	20	20	20	20	20
Room size X Y		Viewing direction at right angles to lamp axis					Viewing direction parallel to lamp axis				
2H	2H	11.0	11.3	11.0	11.5	11.7	11.0	11.3	11.0	11.5	11.7
	3H	10.6	11.2	11.0	11.4	11.5	10.6	11.2	11.0	11.4	11.5
	4H	10.6	11.1	11.0	11.3	11.5	10.6	11.1	11.0	11.3	11.5
	6H	10.6	11.0	10.9	11.3	11.6	10.6	11.0	10.9	11.3	11.6
	8H	10.5	10.9	10.8	11.3	11.6	10.5	10.9	10.8	11.3	11.6
	12H	10.5	10.9	10.8	11.2	11.6	10.5	10.9	10.8	11.2	11.6
4H	2H	10.6	11.1	11.0	11.3	11.5	10.6	11.1	11.0	11.3	11.5
	3H	10.5	10.8	10.8	11.2	11.6	10.5	10.8	10.8	11.2	11.6
	4H	10.3	10.7	10.7	11.1	11.6	10.3	10.7	10.7	11.1	11.6
	6H	10.2	10.7	10.7	11.0	11.3	10.2	10.7	10.7	11.0	11.3
	8H	10.2	10.6	10.7	10.9	11.3	10.2	10.6	10.7	10.9	11.3
	12H	10.1	10.4	10.6	10.8	11.3	10.1	10.4	10.6	10.8	11.3
8H	4H	10.2	10.6	10.7	10.9	11.3	10.2	10.6	10.7	10.9	11.3
	6H	10.1	10.4	10.6	10.8	11.3	10.1	10.4	10.6	10.8	11.3
	8H	10.1	10.3	10.6	10.8	11.4	10.1	10.3	10.6	10.8	11.4
	12H	10.1	10.2	10.7	10.7	11.3	10.1	10.2	10.7	10.7	11.3
12H	4H	10.1	10.4	10.6	10.8	11.3	10.1	10.4	10.6	10.8	11.3
	6H	10.1	10.3	10.6	10.8	11.4	10.1	10.3	10.6	10.8	11.4
	8H	10.0	10.2	10.6	10.7	11.3	10.0	10.2	10.6	10.7	11.3
Variation of the observer position for the luminaire distance S											
S = 1.0H		6.0 / -11.2					6.0 / -11.2				
S = 1.5H		8.8 / -12.1					8.8 / -12.1				
S = 2.0H		10.8 / -12.6					10.8 / -12.6				
Standard table		n/a					n/a				
Correction summand		n/a					n/a				
Corrected glare indices referring to 1224 lm total luminous flux											

COEFFICIENTS OF UTILIZATION

Ceiling reflectance	80				70				50			30			10			0
Wall reflectance	70	50	30	10	70	50	30	10	50	30	10	50	30	10	50	30	10	0
Floor reflectance	20	20	20	20	20	20	20	20	20	20	20	20	20	20	20	20	20	0
RCR	(RCR: Room Cavity Ratio) Room Values are expressed as percentage of Lumens delivered to the task surface																	
0	119	119	119	119	116	116	116	116	111	111	111	106	106	106	102	102	102	100
1	115	113	111	110	113	111	109	108	107	106	105	103	102	101	100	99	99	97
2	112	108	105	103	110	107	104	102	103	101	100	101	99	97	98	97	95	94
3	108	104	101	98	107	103	100	97	100	98	96	98	96	94	96	94	93	91
4	105	100	96	94	104	99	96	93	97	94	92	95	93	91	94	92	90	89
5	102	97	93	90	101	96	92	90	94	91	89	93	90	88	92	89	88	86
6	100	94	90	87	99	93	90	87	92	89	86	91	88	86	90	87	85	84
7	97	91	87	85	96	91	87	84	90	86	84	88	86	83	88	85	83	82
8	95	89	85	82	94	88	85	82	87	84	82	86	84	81	86	83	81	80
9	93	86	83	80	92	86	82	80	85	82	80	84	82	79	84	81	79	78
10	90	84	81	78	90	84	80	78	83	80	78	83	80	78	82	79	77	77

LAMPS (number of lamps)

LUMINAIRE BUDGETARY DIAGRAM



ZONAL LUMEN SUMMARY

0°-10°	10°-20°	20°-30°	30°-40°	40°-50°	50°-60°	60°-70°	70°-80°	80°-90°
507 lm	516 lm	154 lm	37.8 lm	4.95 lm	1.10 lm	0.278 lm	0.158 lm	0.176 lm
90°-100°	100°-110°	110°-120°	120°-130°	130°-140°	140°-150°	150°-160°	160°-170°	170°-180°
0.163 lm	0.160 lm	0.146 lm	0.148 lm	0.238 lm	0.421 lm	0.656 lm	0.518 lm	0.112 lm

FLICKER

FLICKER CURVE (COMPLETE SAMPLED)



FLICKER FRAME (FRAME OF ONE FLICKER)



FLICKER FFT (FREQUENCY SCOPE OF FLICKER)



FLICKER RESULTS:

Flicker frequency:	n/a Hz
Flicker index:	n/a
Flicker percentage:	n/a %
SVM: (Visual flicker)	n/a

FLICKER CONDITIONS:

Sample rate:	n/a samples/second
--------------	--------------------